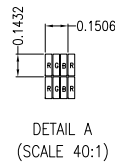
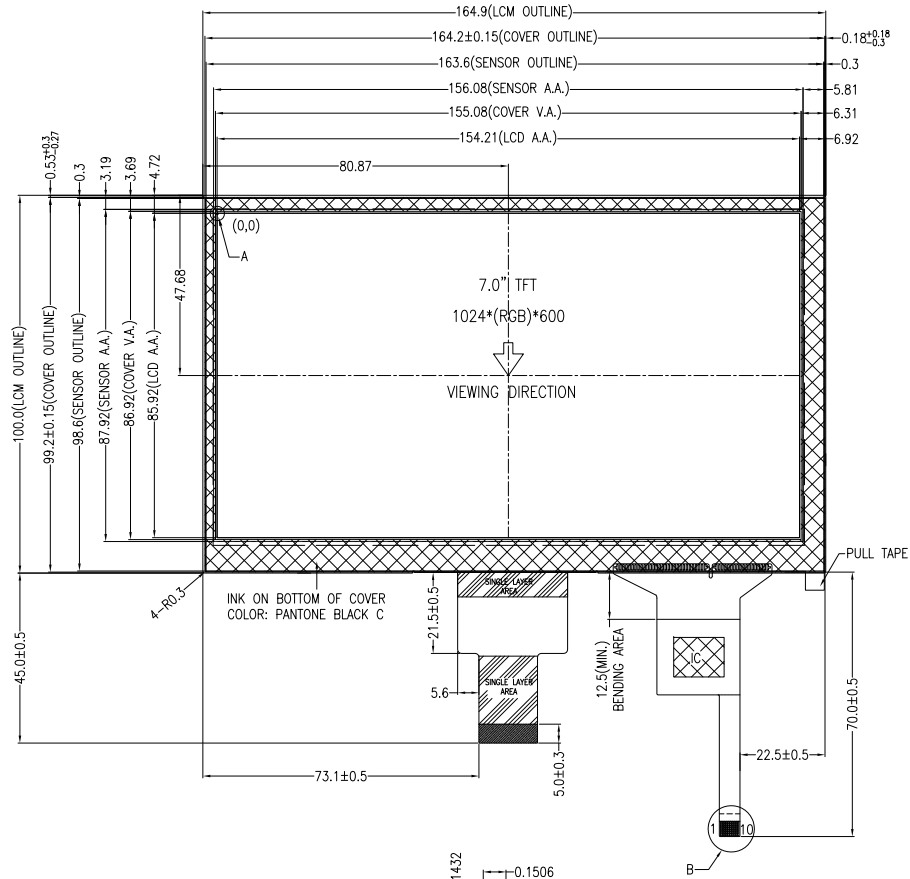


NO MECHANICAL HOUSING TO HOLD THE TFT AND THE TOUCH PANEL ON THIS PRODUCT, SO THE END UNIT'S MECHANICAL DESIGN MUST INCLUDE A HOUSING FOR PREVENTING THE SEPARATION OF THE TFT AND THE TOUCH PANEL.



NOTES FOR TFT:

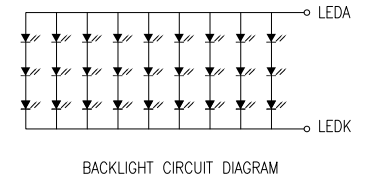
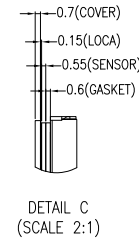
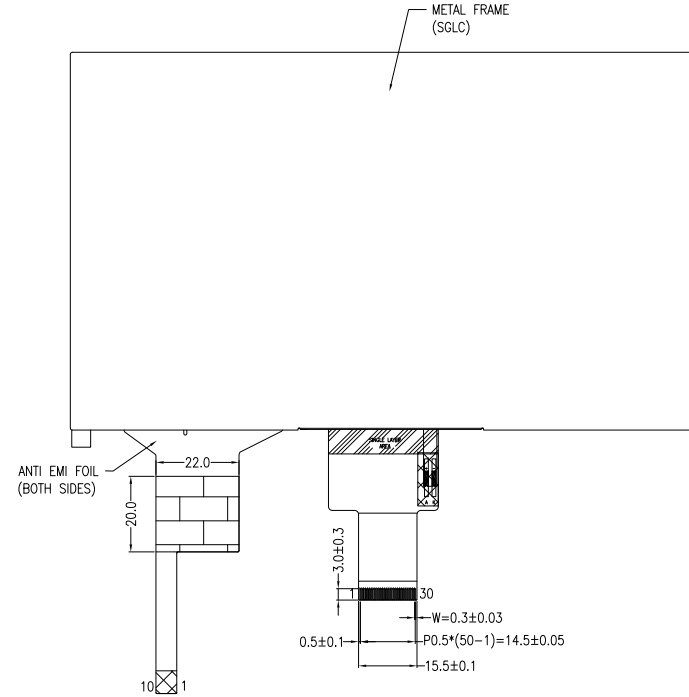
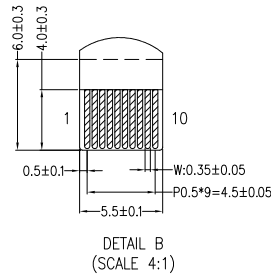
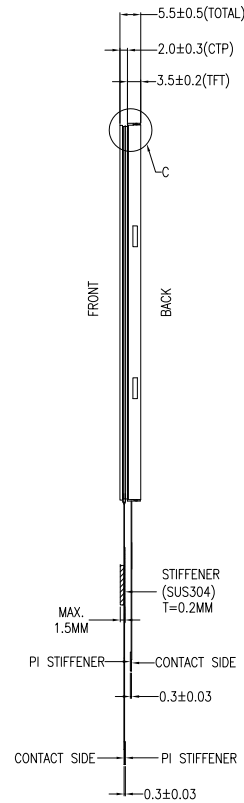
1. DISPLAY TYPE: TFT, TRANSMISSIVE, NORMALLY WHITE
2. OPERATING VOLTAGE: VDD=1.8V (TYP.)
3. VIEWING DIRECTION: 12 O'CLOCK
4. DRIVER IC: EK79007AD + EK73217BCGA
5. LED BACKLIGHT: 27-CHIP WHITE LED, If=180mA, Vf=8.7V~9.9V
6. TOP POLARIZER SURFACE TREATMENT: ANTI-GLARE

NOTES FOR OTHERS:

1. OPERATING TEMP.: -20°C ~ 70°C
2. STORAGE TEMP.: -30°C ~ 80°C
3. SURFACE LUMINANCE: 340 CD/M<sup>2</sup> (TYP.) WITH CTP
4. ONLY THE SINGLE LAYER AREA ON FPC IS BENDABLE AND THE MINIMUM BEND RADIUS IS 1.5MM
5. GENERAL TOLERANCE: ±0.3MM
6. ROHS COMPLIANT

NOTES FOR CTP:

1. 7.0 INCH PROJECTIVE CAPACITIVE TOUCH PANEL
2. COVER GLASS + SENSOR GLASS + FPCA
3. OPERATING VOLTAGE: VDD=3.3V
4. DRIVER IC: FT5426DQ8-003
5. INTERFACE: I<sup>2</sup>C
6. RESOLUTION: 1024\*600
7. MULTI FINGER: UP TO 10
8. HARDNESS OF COVER SURFACE: 7H(750g)
9. FIRMWARE FILE: TBD



PIN DESCRIPTION FOR TFT	
PIN	SYMBOL
1	LEDA
2	LEDA
3	VGH
4	VGL
5	UPDN
6	SHLR
7	LEDK
8	LEDK
9	AVDD
10	GND
11	MIP1_D3P
12	MIP1_D3N
13	GND
14	MIP1_D2P
15	MIP1_D2N
16	GND
17	MIP1_CLKP
18	MIP1_CLKN
19	GND
20	MIP1_D1P
21	MIP1_D1N
22	GND
23	MIP1_D0P
24	MIP1_D0N
25	GND
26	STBYB
27	LRSTB
28	VDD
29	VDD
30	VCOM

PIN DESCRIPTION FOR CTP	
PIN	SYMBOL
1	VSS
2	VCC
3	SCL
4	NC
5	SDA
6	NC
7	/RST
8	NC
9	/INT
10	VSS

<b>MULTI-INNO TECHNOLOGY CO., LTD.</b>			
DRAWN BY:	CAROL 2022.09.23		MODULE P/N:
CHECKED BY:		SCALE : 1/1	MI0700BQT-1CP1
APPROVED BY:		UNIT: mm	DESCRIPTION:
VERSION NO:	01	SHEET NO.: 1/1	TFT + CTP MODULE

01	FIRST ISSUE	CAROL	2022.09.23
VER.	REVISED DESCRIPTION	REVISOR	DATE